



Residence Life Guide To Living On Campus First Year Student Edition



20
25

| COURAGE TO BE MORE



MISSION

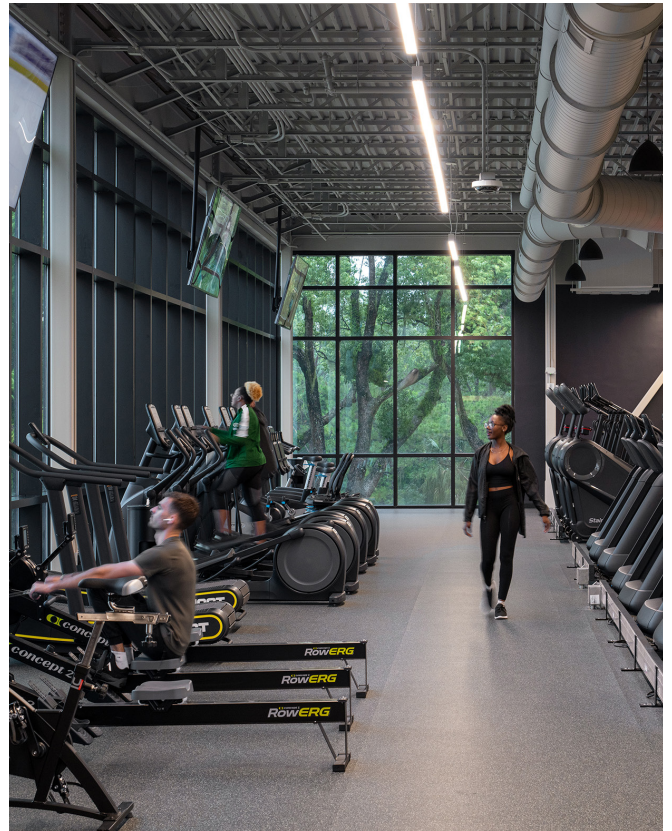
The Saint Leo University Office of Residence Life empowers students to develop a safe and inclusive living experience that promotes a thriving community of holistic student learning.





COMMUNITY AMENITIES

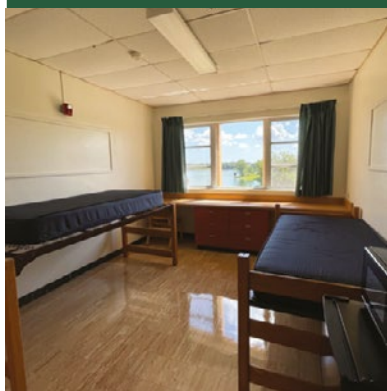
Wifi, Free Laundry, Game Room, Study Lounges, Ping Pong Tables, Basketball Court, In-Hall Fitness Areas, Sand Volleyball Courts and Charcoal Grill/Picnic Areas. The Esports Arena will have posted hours for open play time when the team is not practicing or competing.



FLOOR PLAN

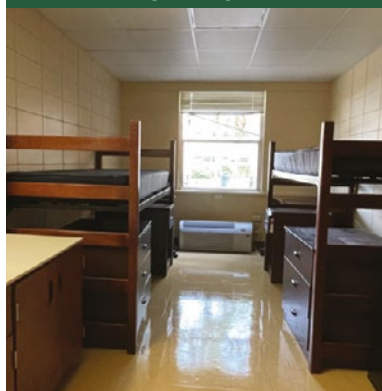
FIRST YEAR AREAS

14'L X 11'W



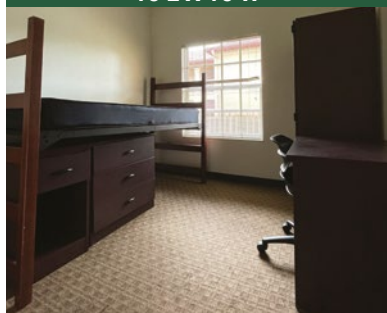
Snyder Double

18'L X 10'W



Benoit / Henderson Double

10'L X 10'W



Roderick Single

16'L X 10.5'W



Alumni Double Room / Snyder Garden Level

Housing Placement for Transfer Students

If you are transferring to Saint Leo University with fewer than 19 completed college credits, you will be placed in first-year student housing.

This ensures you have access to the same resources, support systems, and community connections that help new students transition successfully into life at Saint Leo.

For the latest pricing information, please visit: <https://www.saintleo.edu/board-rates>



WHAT SHOULD I BRING?

SOME COMMON THINGS INCLUDE:

- Bathrobe/Towels
- Bedding for a standard twin bed
- Can opener
- Cleaning supplies
- Clothes hangers
- Desk lamp
- Flashlight with batteries
- Laundry basket and detergent
- Microwave
- Mini Fridge
- Plastic containers for dry food
- Pictures/posters
- Shower caddy
- Trash can
- Vacuum cleaner / broom
- 6 Outlet UL Rated Surge Protector

Roderick



WHAT COMES WITH THE ROOM?

Each room is furnished with a desk chair, standard twin bed, and wardrobe/closet.

CAN I BRING A CAR?

View out current parking permit rates [here](#)/ Students are strongly encouraged to register their vehicle online to help avoid long lines at the beginning of the semester. To register a vehicle online simply click the button below. You will need your Saint Leo Portal ID and password to access this form. This form is only compatible with Internet Explorer web browser. Once completed, a decal will be assigned and bulled to your student account. It will then be available for pick-up upon arrival on campus for the semester.

Snyder



CAN I BRING A BIKE?

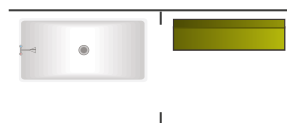
Bicycles may be kept in rooms as long as both roommates agree. Bike racks are also located outside residence halls. All students bringing bicycles to campus must register them with University Safety to receive their free bicycle decal.

Henderson & Benoit

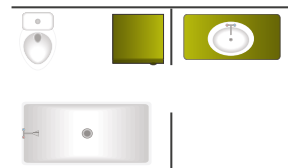


BATHROOM STYLES

Our residences feature two bathroom styles: community style and suite-style.



Community style bathrooms feature showers in one centralized location where there are multiple stalls with a changing station.



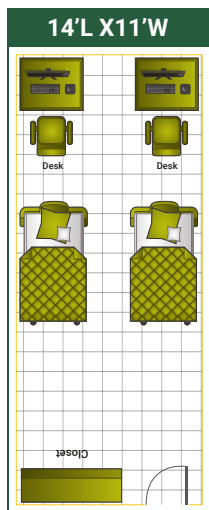
Suite-style bathrooms include a shower, sink and toilet that is shared by individuals living in the same suite.

Alumni

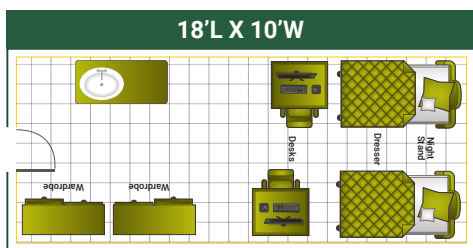


FLOOR PLAN & PRICING

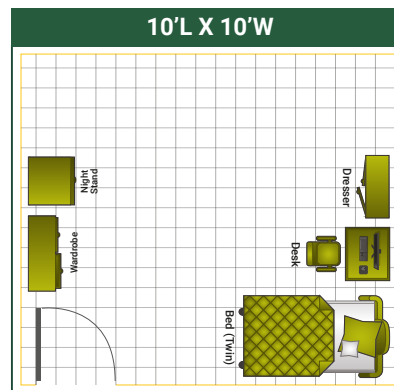
LOWER CLASS AREAS



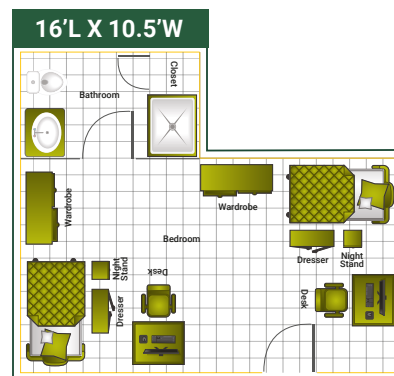
Snyder Double



Benoit/Henderson Double



Roderick Single



Alumni Double Room / Snyder Garden Level

For the latest pricing information, please visit: <https://www.saintleo.edu/board-rates>

All full-time University Campus students are required to live on campus (exceptions are allowed for those students living and commuting from home, married students, veterans, non-traditional students, or senior students who have earned over 90 credit hours). Qualify for exemption with financial implications. If you opt out after signing a contract, it's more complicated with financial ramifications.

Students must be **17** years or older to live on campus.

Approval is needed from the Director of Residence Life for exceptions to this policy.



MEAL PLAN INFORMATION



- 19 Meal Plan
- 10 Meal Plan
- 5 Meal Plan
- Commuter Meal Plan (block of 25 meals)

For the latest pricing information, please visit:
<https://www.saintleo.edu/board-rates>

- Students in Alumni, Roderick, Benoit, Henderson, Snyder, Apartments 1-6 with kitchenette are required to have the 19 meal plan.
- Students in Apartments 1-4 with a kitchen are required to choose a 5, 10, or 19 meal plan.
- Meal plan is chosen during the Housing Selection Process.
- All students will be assigned the 19 meal plan unless another meal plan is chosen during the Housing Selection Process.





RESIDENCE LIFE STAFF

LOVE TO LIVE HERE

THE DEPARTMENT OF RESIDENCE LIFE STAFF WORKS TO PROVIDE SUPPORT, GUIDANCE, AND ASSISTANCE TO 1,547 RESIDENTIAL STUDENTS

Our professional staff team is comprised of the Dean of Students, Director of Residence Life Housing Operations, two Area Directors, and a Housing Operations Manager. In addition to the professional staff, we have 6 graduate assistant (GA's), and 47 Resident assistants (RA's). Both students and professional staff are available 24 hours a day, 7 days a week for assistance.



LIVING LEARNING COMMUNITIES (LLC)



What are the benefits of being a living-learning community resident?

- Live and learn alongside students with similar interests.
- Experience exciting programs that relate to your interests.
- Give back to the local and global community through service.
- Have a better connection with Saint Leo University faculty and staff members.
- Research shows that students who take part in theme floor communities have higher GPAs, enjoy a better college experience, and gain more leadership skills than their peers who are not in a Living Learning Community.

Members of these communities will have the opportunity to:

- Become involved in developing community standards and planning the future of the Living Learning Community
- Explore and participate in opportunities provided by The Office of Residence Life, and Academic Affairs
- Each semester, members of these communities will be expected to:
- Participate in the Opening Kick-Off Dinner
- Participate in at least 5 hours of community service (Leadership and Service ONLY)

Be an active member of the Living Learning Community by:

- Participating regularly in community programs and activities
- Register for any required classes and attend (Prayer and Mindfulness only)
- Help build community on the floor through positive shared experiences
- Provide feedback and take part in developing the LLC for future community members
- Maintain a 2.5 cumulative/semester GPA and be in good conduct standing

This year, the Office of Residence Life offers three Living Learning Communities that residential students can choose from.

NURSING LIVING LEARNING COMMUNITY (LLC)

The Nursing Living Learning Community (LLC) fosters an environment where students can focus on first year nursing requirements and successfully transition to Saint Leo University. This community is open to first-year students who are Bachelor of Science in Nursing (BSN) students. The nursing community will incorporate faculty and staff activities to help residents succeed academically during their first year.

Who is eligible for this community?

Students who are freshmen BSN students at Saint Leo University are eligible to apply for Nursing LLC housing. Priority will be given to freshmen who accept their admittance to Saint Leo University, are identified as Nursing students, and complete their housing application.

Why live in Alumni Hall?

- Live with other students in the Nursing program
- Connect with faculty and staff
- Participate in programs and activities designed for your major
- Have access to private bathrooms that have been renovated
- Live in housing that is centrally located to academic buildings on campus

When can I apply for this community?

Applications for Nursing LLC Housing will open mid-May of each academic year. Students who qualify for this LLC will receive an email indicating when the applications are open. Nursing LLC Housing will likely fill before the final deadline for housing applications, which is Friday, June 5, 2026. All applications must be submitted to the Office of Residence Life through the Residence system.

HONORS LIVING LEARNING COMMUNITY

This community fosters an environment where students can focus on academic achievements and successfully transition to Saint Leo University. This community is open to first-year students who are in the Saint Leo University Honors Program. The Honors LLC will incorporate faculty and staff activities to help residents succeed academically during their first year.

LEADERSHIP AND SERVICE LIVING LEARNING COMMUNITY (LLC)

Are you interested in growing as a leader and serving others? The Leadership and Service Living Learning Community will encourage leadership development through access to student and community leaders on campus, building leadership competencies through activities and programs, and gain opportunities to lead within the community by shaping community standards and helping to plan for the future of the LLC.

Community members will also have the chance to participate in service opportunities on campus and within the local community, in alignment with the Benedictine mission of the University and the University's Core Value of Responsible Stewardship. The Leadership and Service LLC is for first-year students only, and residents of this community will live in Henderson and Benoit Halls.

All incoming students will receive an email to join Leadership and Service.

Please note that you will be placed in its perspective housing areas if you are selected to be an LLC member.

WHAT OUR RAs DO



Resident Assistants serve an important role in assisting with the safety and security of students and serve in a rotation ensure students have 24:7 access to staff. Roles of a Resident Assistant include:

- Host monthly programs to build community with residents on the floor and in the building
- Trained in mediation to assist with roommate conflicts
- Familiar with campus resources and can connect students to appropriate campus offices
- Serve as a mentor and support system to residents
- Provides support to residents who may need assistance (lock-outs, maintenance concerns, etc.)

STUDENT CODE OF CONDUCT

The Code of Conduct sets the University's expectations for student behavior. All students are expected to review the Code of Conduct to gain an understanding of our policies. Students are encouraged to review additional residence hall specific information in the Guides to Residential Living. Following the Code of Conduct helps create a safe environment for our Saint Leo students.

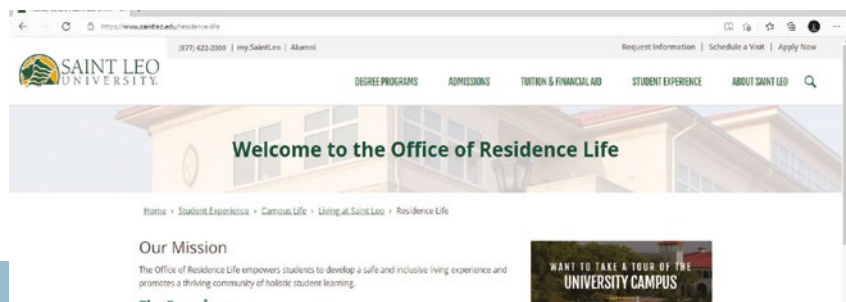


APPLY FOR HOUSING NOW

NEW INCOMING STUDENTS

1. Work with your Admissions Counselor on all admission requirements including deposit.
2. Newly admitted students will be able to access the residence system/housing portal 72 hours after their deposit.
3. Before you can access your housing application online you will need to set up your Saint Leo Email account and password.
4. To access your housing application, log onto your online residence system (housing portal) account at slu-residence.symplicity.com/index.php/pid911004 and follow the instructions for logging in.
5. After you log into your account, click the blue "Get Started" button on your home screen and begin your housing application
6. Once you have completed your housing application be sure you have clicked the "Submit" button!
7. You should receive a confirmation that your housing, approved within 48 business hours.

Saint Leo University Residence Life
website | <https://www.saintleo.edu/residencelife>







CONTACT INFORMATION

Suite 1002, Apartment 6
University Campus-MC 2068
Post Office Box 6665
Saint Leo, Florida 33574

Phone: 352-588-8268
residence.life@saintleo.edu





Follow us Today

f @SaintLeoResLife

@ SaintLeo.ResLife